



CITADEL
DAWN OF LUXURY

On The Hills – Off The Sea



CITADEL
DAWN OF LUXURY

On The Hills – Off The Sea

For the Creme de la Creme

You have a penchant for high-end luxury vehicles and yachting to exotic places.

You frequent the most opulent hotels around the globe.

You rub shoulders with the influential and mix with the most glamorous of circles.

You belong to the elite and quintessential of society.

You belong to La Citadel,
a community of bayfront villas,
for the Creme de la Creme,
at Rishikonda, Vizag!

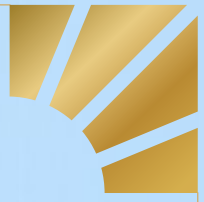
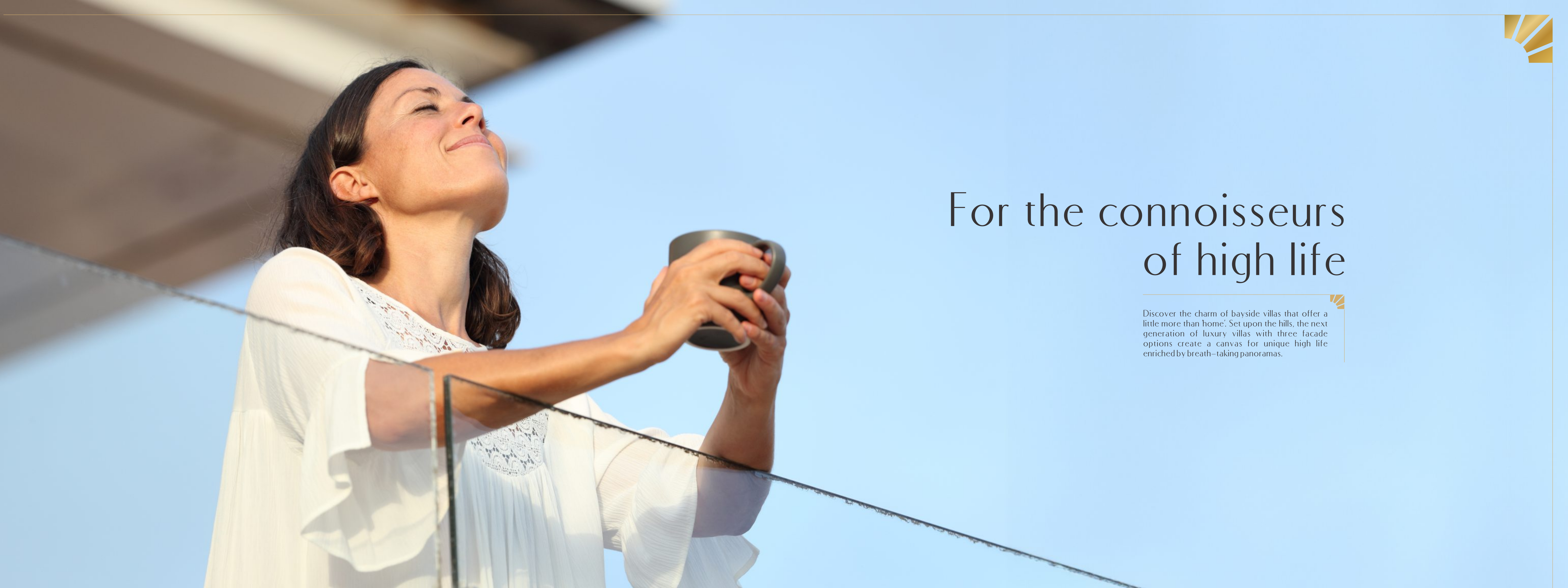


For the exclusive & elite

LA
CITADEL

Make your home a symbol of your status and experience luxury in all its glory. La Citadel, amidst serene greenery and next door to the blue waters, delivers an elevated Vizag lifestyle with exceptional spaces that create an atmosphere of natural yet modern exclusivity.

The location of La Citadel emphasizes the idea of being unique and having greenery and water on either side of the villas allows for something very rare: a view from everywhere.



For the connoisseurs of high life


Discover the charm of bayside villas that offer a little more than home'. Set upon the hills, the next generation of luxury villas with three facade options create a canvas for unique high life enriched by breath-taking panoramas.





For those who aspire awe—inspiring views

Delight in a distinctive living experience that captures the invigorating energy of its surroundings. At La Citadel, each villa showcases unparalleled views over the water and cityscape, connecting you to the surroundings through quietly curated contemporary design.



For a delightful homecoming, each and every time.

Step into a world where natural greenery meets the blue sea. With an inviting setting, the natural entrance displays a sense of grandeur and paves the way for an upscale living experience.



For a life designed around nature

Experience an outdoor space full of life next to your home. Sprawling with fresh bounties of greenery, the lush and healthy outdoor spaces create a seductive setting and give you inspiration to enjoy clean air and bright sunshine in the heart of a bustling city.



LEGEND:

ARRIVAL ZONE / ENTRANCE-EXIT PLAZA

1. Entrance & Exit Plaza
2. Entrance Water Body with Mound
3. Main Entrance Paving
4. Entrance Island Water Feature with Fountain Steps
5. Security Room
6. Entrance Pedestrian Pathway
7. Lawn with Edge Planting

OVERALL AREA

8. Paving Pattern at Junctions
9. Boundary Plantation
10. Entrance to the Villas

CENTRAL OPEN SPACE

11. Open Space Entrance Deck
12. Stepped Water Feature with Trees
13. Selfie Point
14. Waterbody near Amphitheatre
15. Connecting Pathway / Elderly Walkway
16. Elderly Seating Area
17. Party Lawn
18. Amphitheatre
19. Stage
20. Connecting Pathway
21. Ramps
22. Mounds
23. Skate-boarding Area
24. Children's Play Area
25. Children's Play Area
26. Half Basketball Court
27. Tennis Court
28. Volleyball Court
29. South Entrance Pergolas
30. Pergola With Seating
31. Entrance Feature Wall with Plantation
32. Feature Wall Behind Amphitheatre
33. Entrance Plaza
34. Yoga Pavillion with Buddha Statue

CLUBHOUSE AREA

35. Entrance Area Paving Pattern
36. Club House Cascading Water Feature with Trees
37. Club House Entrance Water Body with Sculptures
38. Peripheral Pathway with Seating
39. Entrance Plaza
40. Steps
41. Ramp
42. Wall Climber
43. Play Area with Equipments
44. Mounds
45. Shallow Stream with Central Sculpture
46. Elevated Wooden Bridge with Viewing Decks
47. Gravel Walkway
48. Putting Zone
49. Golf Area

OTHER AREAS

50. Entrance Area with Pergola
51. Mounds
52. Connecting Pathway
53. Children's Play Area
54. Seating
55. Cricket Practice Pitch
56. Cycle Track cum Pathway in the Woods

Tennis Court



For those
who think 'sport's
a way of life'

Pump up your adrenaline in a healthy way with some fun and exciting sports in the community. Lifting your spirits and keeping you energized, La Citadel has dedicated spaces to practice your favorite sports and indulge in some game-time with friends

Half Basketball Court



Volleyball Court



Amphitheatre



For those
'entertainment,
entertainment,
entertainment' kind

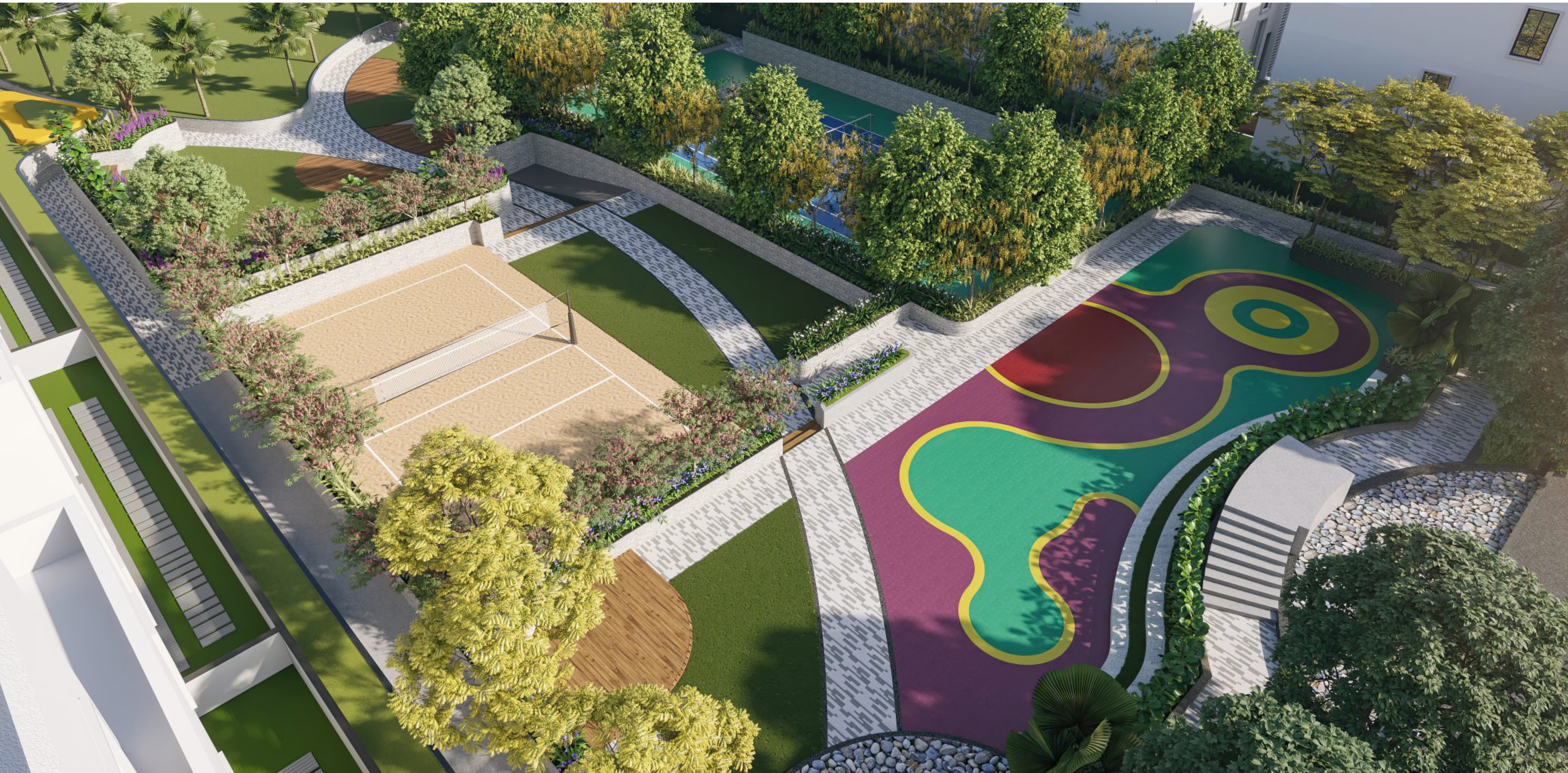
Soak in the tranquility of the hills before enjoying the music played by nature. For those who prefer outdoor entertainment, the amphitheatre offers the perfect space to enjoy cultural programmes, community celebrations, gatherings etc. with panoramic views as the backdrop.

Amphitheatre



Seating Spaces





For those curious and keen little minds

Keep the children occupied during idle hours and add fun and excitement to their lives without leaving your home. The dedicated play area in the community is a safe place that inspires children to get outside, play with friends and turn daydreams into adventures.





East Street View



East Facing Villa



Area Statement



PLOT AREA	- 600 SQ. YDS.
GROUND FLOOR AREA	- 2,830 SFT.
FIRST FLOOR AREA	- 3,010 SFT.
SECOND FLOOR AREA	- 2,835 SFT.
TOTAL BUILT UP AREA	- 8,675 SFT.



B1-102

B1-103

West Facing Villa



Area Statement



PLOT AREA	- 600 SQ. YDS.
GROUND FLOOR AREA	- 2,769 SFT.
FIRST FLOOR AREA	- 2,978 SFT.
SECOND FLOOR AREA	- 2,727 SFT.
TOTAL BUILT UP AREA	- 8,476 SFT.

Living Area



For an upscale living experience

Celebrate life and lifestyle with homes that not only exude opulence but also pay homage to the beauty of nature. The light-filled residences blend with the scenic surroundings, delivering your perfect version of home, paired with 12 feet high ceilings and impeccable features.



Master Bedroom



For those who like to sleep in a sea of stars

Treat yourself to those luxury bedroom spaces you have always dreamed of. Providing a seamless indoor-outdoor connection, the bedrooms take luxury to a whole new level and invite abundant natural light while displaying the beauty of the surroundings as the ultimate background.



Dining Area



For those who wish to dine with a view, everyday

Embrace a sense of extravagance and refinement with modern kitchen cabinets and high-end features. Elevating the luxury factor while providing convenience and efficiency, the 138 residences provide a sophisticated environment with designer kitchens that open to panoramic views.



For a lifestyle that defies gravity

A one-of-a-kind lifestyle deserves a one-of-a-kind Club. The Clubhouse delivers 40,000 Sft. of exceptional amenity spaces that set a mood of tranquil, modern exclusivity for utmost relaxation and comfort.

Clubhouse
70,000 Sft.



Reception



For a warm and welcoming reception

Enjoy a lounge space that is as unique as your personality. With its comfy & cozy feel, the reception lounge makes a remarkable first impression. Calming yet energizing, it compliments the lifestyle and inspires everyone who walks in.



For those passionate about badminton

Practice your strokes and smashes and take your game to the next level or just have fun with your friends in the community. Whether you're a badminton enthusiast or someone seeking to explore this captivating sport, the indoor badminton court provides the perfect platform to indulge in your passion.

Banquet Hall



For those
who celebrate the
gift of life

Add a touch of style to your celebrations with a sparkling venue overlooking the sea. With its expansive and cozy set-up, the banquet hall is sure to impress your guests and add to the moment of being together with loved ones.



For those
who like to party
high above the rest

Enjoy sumptuous social spaces that are perfect for special occasions, celebrations and family gatherings. Making it an intimate experience to treasure, the sky bar & lounge lets you celebrate under the night sky while providing spectacular views.

Yoga



For those
who demand a life
of wellness

Indulge in a Zen-full experience within the confines of your home. Setting a tranquil mood, healthy spaces inspire a sense of calm amidst the urban magic of Vizag with an effortless blend of natural yet modern spaces.



For those active & healthy souls

Work up the body, stretch your lives to the fullest and be content from the core. With dedicated spaces for personal growth and self-improvement, La Citadel makes it easy to stay fit and motivated to squeeze in workouts, daily.

For a cup of conversation

Grab a friend or your computer and appreciate the beautiful view of Vizag with a coffee. Serving freshly brewed coffee, the coffee shop in the clubhouse is a great place to meet – over small sips and long chats.

Coffee Shop



For those who treat guests equal to god

Give your guests a royal treatment with dedicated suites that provide exceptional luxury and elegant tranquility. Exceeding expectations and ensuring a stress-free experience, the guest suites create a comforting ambiance through immersive spaces.

Guest Bedroom





For the pleasure of staying indoors

Pursue an exciting new game or activity, meet neighbours and make some friends who share your interest in the game. For new and challenging experiences, create your own unique game scenarios and have fun playing with your friends or family.

Swimming Pool



For a
sense
of serenity
and elevation

Immerse yourself in tropical leisure at La Citadel's bayfront pool, with plush cabanas and the beauty of the Bay of Bengal unfolding before you. Offering an ethereal setting that creates a sense of tranquility, it lets you immerse yourselves in the beauty of the surroundings.

Party Deck



For those
desiring
more room
to celebrate

Host parties and receptions, as well as get-togethers and events, high above the rest. The terrace party lawn is a spacious, tranquil venue to get everyone out of the house for some fresh air to celebrate and relax under the stars.



CITADEL

Specifications



STRUCTURE

RCC framed structure with red Clay Brick.



PLASTERING

Internal: Sand faced cement plastering.

External: double coat cement plastering.



FLOORING AND DADO

Drawing room, living room, dining room, dry kitchen and common areas: Imported natural marble flooring as per selection.

All Bedrooms: Superior quality large size Vitrified tiles of reputed make / laminated wooden flooring of reputed make.

Staircase: Imported natural marble flooring as per approved design.

Wet kitchen: Anti-skid superior quality vitrified tiles.

Toilets: Anti-skid large size vitrified tile.

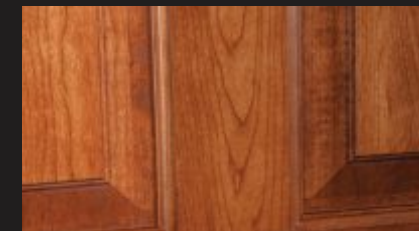


TOILETS

Sanitary ware: Toto/Villeroy & Bach /Reputed European make washbasins and wall hung EWC with concealed flush tank in all toilets.

Faucets: Hansgrohe/Toto or equivalent in all toilets.

Counter: Granite or imported marble counter in all toilets.



DOORS & WINDOWS

Main door: Teakwood frame with Designer Wooden Main Door & Shutter if 11'.6" height with premium designer hardware fittings of reputed make.

Internal Doors: Teakwood frame with flush shutter of 9" height in veneer finish with hardware of reputed make.

Door Hardware: Hafele / Yale / Dorma or equivalent.

Windows & French Doors: Aluminum frame with toughened glass of reputed make.



UTILITY AREA

Provision for washing machine/dishwasher (subject to design).



PAINT

External: Two coats of exterior emulsion paint with texture finish as per approved design.

Internal: Two coats of premium emulsion paint over smooth putty finish.



WET KITCHEN

Granite counter with single bowl stainless steel sink.

Provision for water purifier / RO unit.

2 Feet vitrified tile dado above granite counter.



PLUMBING SYSTEM

Hydro pneumatic system for water supply.

Water treatment to potable water standards.

Recycle and reuse of sewage water for gardening.

Rain water recharge system / Water metering.



ELECTRICAL FIXTURES

Wires: Fire retardant low smoke wires of reputed make (Finolex / RR Kable / or equivalent).

Switches: Modular switches of reputed make (Schneider / Legrand or equivalent).

Light Fixtures: LED type light fixtures in all common areas for energy savings.

Power Distribution: Through underground cabling Power Quality: Regulated power to the entire complex along with surge suppressors.

Backup Power: 100% Back up with DG sets.

Metering: Both normal & DG power metered through energy meter.



ELEVATOR

Provision to the lift / home elevators.



COMMUNICATION NETWORK

Clubhouse & Common Areas with Wi-Fi connectivity.



SECURITY NETWORK

CCTV cameras in identified common areas & Clubhouse with monitoring & recording from Security/Maintenance office.

Boom Barriers with long range readers at entry and exit for tenant's unobstructed movement.

Barbed Wire security fence on compound wall.



LANDSCAPING

Professionally planned and executed landscape in an around project with designer streetlights as per approved design.

NOTE:

The promoters reserve the right to make changes in elevation, specifications and plans as deemed fit. All renderings and views are for representation of the project meant for conveying the idea only. Specifications are subject to changes @ Builder's/Architect's discretion.

Location



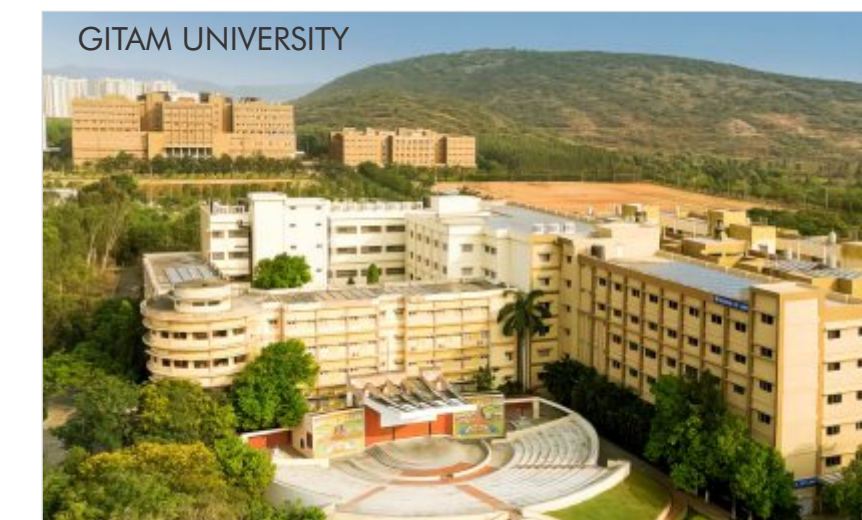
RUSHIKONDA HILL



MILLENNIUM TOWER



WORLD ONE SCHOOL



GITAM UNIVERSITY



RUSHIKONDA BEACH

For those who like to live above the ordinary

Live in a place that is vastly different from the mainstream neighborhoods. La Citadel is ideally placed between the greenery of the Rushikonda Hills and the pristine blues of Bay of Bengal, providing effortless access to the nearby sea and also natural beauty.



CONCRETE
INFRA

OUR RECENTLY COMPLETED LUXURY VILLA PROJECT



Super-Premium 4 BHK Villa Community in Tadepalli



OUR RECENTLY COMPLETED LUXURY VILLA PROJECT



A new frontier in luxury living

A standout contemporary 4 BHK villas gated community in Nellore



PROJECT CONSULTANTS

ARCHITECTS



23DDS

STRUCTURAL



ENNOVATIVE
DESIGN CONSULTANTS

LANDSCAPING



NAVEEN ASSOCIATES

PCMS



PAVILION
ANFRA

MEP



INTRA CULTURE
DESIGNERS

NEW MEDIA



team
works
your new media partner



VPR PROJECTS

428/2, Pedda Rushikonda, Rushikonda APIC, Visakhapatnam, Andhra Pradesh - 530045.

lacitadel@vprprojectsvizag.com | +91 99620 00401



AP RERA

P03280032915